



## INTERIOR DESIGN

20 SAVILE ROW  
LONDON W1S 3PR

T 020 7292 0585  
F 020 7292 0592  
[www.mirvac.co.uk](http://www.mirvac.co.uk)





At Mirvac Interiors, we create, deliver and implement bespoke solutions which provide a distinctive and competitive advantage.

As specialist Interior Designers, we work closely with our clients to ensure the design process produces the highest quality results for all our projects. We add value through the creative manipulation of space - we optimise all the aesthetic, practical and economic requirements to create the best design solution.

Mirvac Interiors work with in-house development teams, private developers and clients. Our team is successfully established in the market, with experience in residential, hotel, office and commercial design.

Services we offer vary from development of an initial design brief, concept design and construction documentation through to project managing the completion of your project.





## INTERIOR DESIGN

PORTFOLIO OF  
RECENT PROJECTS





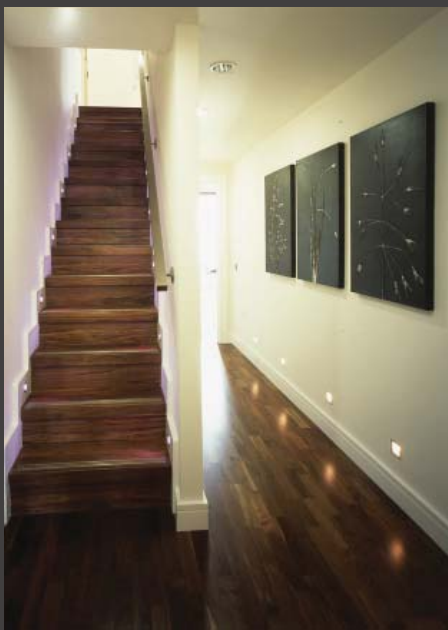
## 001 DISCOVERY DOCK EAST

### NEW BUILD RESIDENTIAL

Situated at South Quay in Docklands, overlooking Canary Wharf, the 24 storey residential apartment building accommodates 184 luxury apartments, including 9 prestigious penthouses.

The contemporary development included a reception and seating area and a health spa with pool and gym facilities.

Mirvac Interiors also undertook the design of the marketing suite, two show suite apartments and one penthouse.





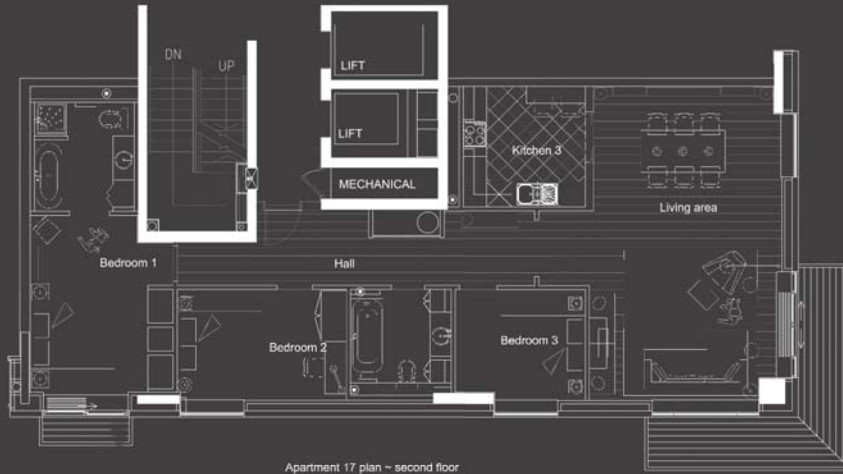
PENTHOUSE KITCHEN



SHOW SUITE BEDROOM



SHOW SUITE LIVING AREA



HEALTH CLUB

DISCOVERY DOCK EAST

TYPICAL APARTMENT SIZES

1 BEDROOM - 1 BATHROOM	58 SQM	624 SQFT
2 BEDROOM - 2 BATHROOM	86 SQM	925 SQFT
3 BEDROOM - 2 BATHROOM	108 SQM	1 162 SQFT

TYPICAL TRIPLEX PENTHOUSE SIZES

3 - 4 BEDROOM - 3 ENSUITE AND CLOAKROOM	174 SQM	1 872 SQFT
---	---------	------------





002 DISCOVERY DOCK WEST

NEW BUILD RESIDENTIAL

As the sister building to discovery dock east, Mirvac Interiors was commissioned to design the 152 apartments and 7 penthouses. The building is serviced by two entrances, both of which incorporate feature lighting and contemporary artwork by leading artists.



RECEPTION



ENTRANCE FOYER



LOUNGE

PENTHOUSES



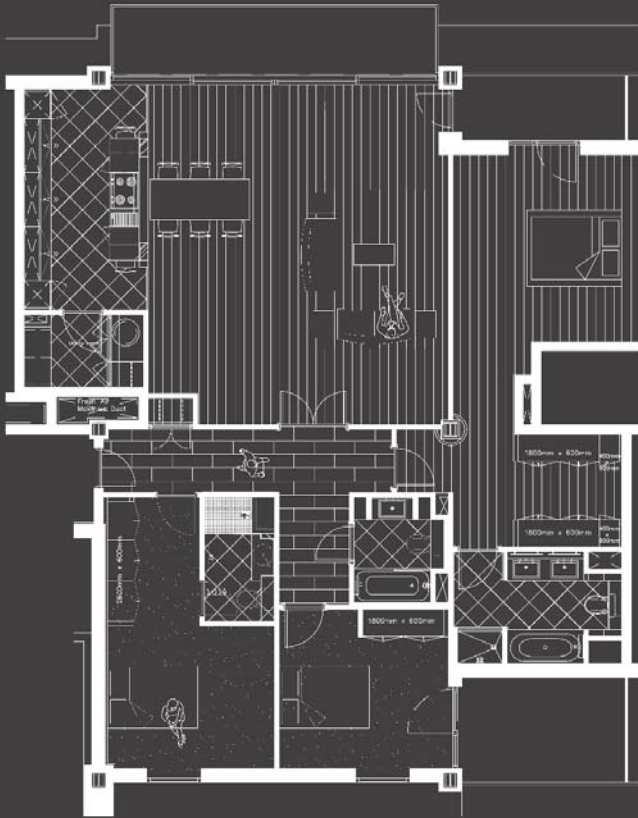
MASTER BEDROOM



MASTER BATHROOM



KITCHEN



DISCOVERY DOCK WEST

TYPICAL APARTMENT SIZES

1 BEDROOM - 1 BATHROOM

52 SQM 560 SQFT

2 BEDROOM - 2 BATHROOM

80 SQM 861 SQFT

TYPICAL PENTHOUSE SIZES

2 BEDROOM - 2 BATHROOM

96 SQM 1033 SQFT

3 BEDROOM - 3 BATHROOM

169 SQM 1819 SQFT



003 4 + 5 SOUTH QUAY SQUARE

NEW BUILD RESIDENTIAL AND  
COMMERCIAL SCHEME

Mirvac Interiors are currently working on the design of this mix use development comprising 28 floors of private and affordable apartments with luxury penthouses, 17 floors of hotel, and 13 floors of serviced apartments.



#### 4 + 5 SOUTH QUAY SQUARE

#### TYPICAL APARTMENT SIZES

1 BEDROOM - 1 BATHROOM  
 2 BEDROOM - 2 BATHROOM  
 3 BEDROOM - 2 BATHROOM  
 4 BEDROOM - 2 BATHROOM

44 SQM 473 SQFT  
 60 SQM 646 SQFT  
 75 SQM 807 SQFT  
 110 SQM 1184 SQFT



## 004 THE ROCK TRIANGLE

NEW BUILD RESIDENTIAL AND RETAIL SCHEME.

This project is situated in Bury, near of Greater Manchester. It is a mixed use development consisting of retail and leisure facilities and three buildings of private and affordable apartments. In total there are 340 private apartments and 57 affordable units. The scheme is due for completion May 2009.

THE ROCK TRIANGLE

TYPICAL APARTMENT SIZES

1 BEDROOM - 1 BATHROOM  
2 BEDROOM - 2 BATHROOM

44 SQM 473 SQFT  
60.5 SQM 651 SQFT



005 THE RETREAT, RICHMOND, SURREY

NEW BUILD RESIDENTIAL

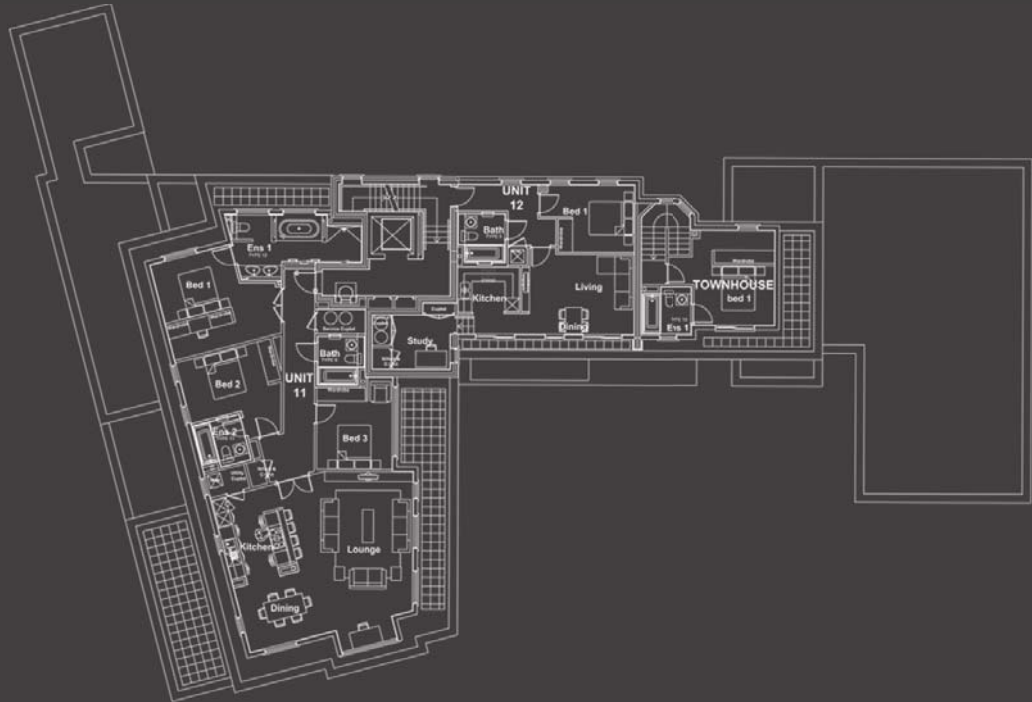
This project is situated close to the River Thames in Richmond, Surrey. It is a residential development consisting of luxury and contemporary accommodation of 2 three bedroom townhouses, and 12 apartments and penthouses. A bespoke interiors brand has been created for the client.

THE RETREAT

TYPICAL APARTMENT SIZES

1 BEDROOM - 1 BATHROOM  
2 BEDROOM - 2 BATHROOM  
2 BEDROOM - 2 BATHROOM

53 SQM    570 SQFT  
65 SQM    700 SQFT  
140 SQM 1507 SQFT



TYPICAL FLOOR PLAN OF THE RETREAT



CONCEPTUAL PERSPECTIVE OF AN ENSUITE BATHROOM



CONCEPTUAL PERSPECTIVE OF THE LIVING SPACE OF AN APARTMENT

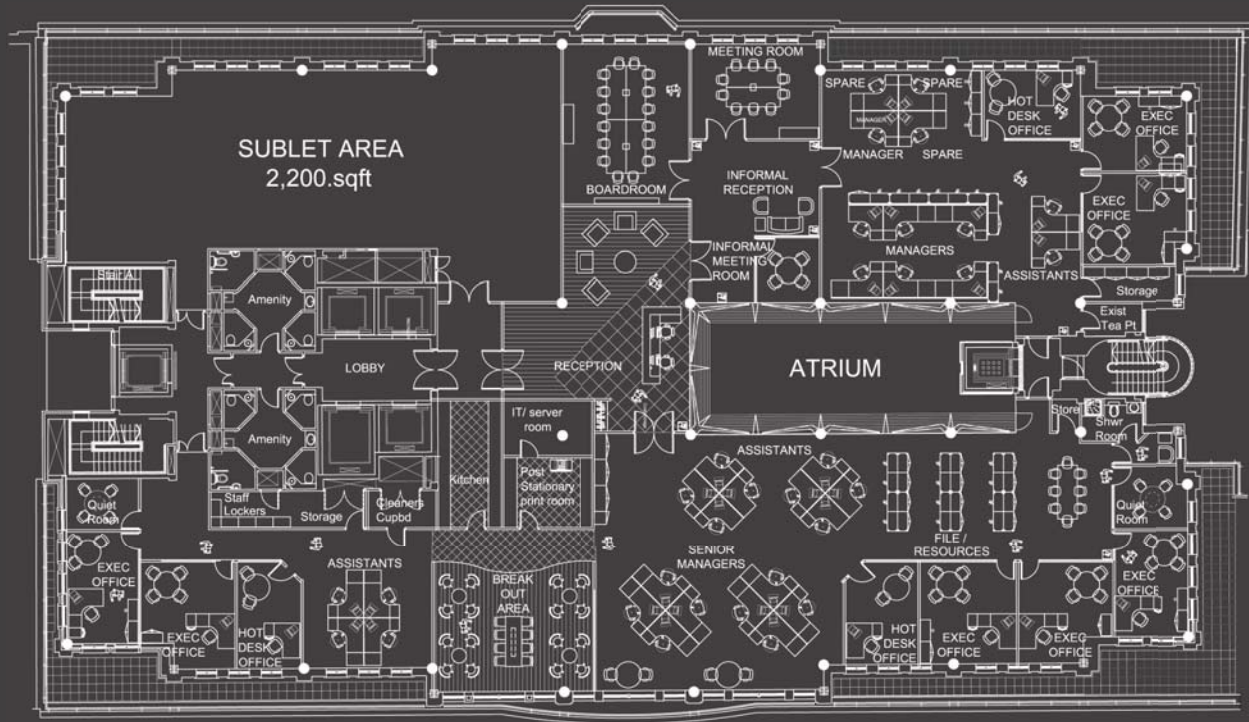
006 MILLS CORPORATION, MAYFAIR, LONDON

CORPORATE DESIGN AND FITOUT

Mirvac UK interiors was commissioned to undertake the corporate design for a new UK headquarters facility in Savile Row, London.

The office facilities incorporated a prestigious reception area, washing area, luxury conference facilities, breakout areas and minimalist treatment of the interior space.

The entire floor has been designed for the fit-out, with furniture and finishes selected to create the appropriate corporate design for the UK headquarters of this American Company.



OFFICE FIT-OUT FLOOR PLAN



CONCEPTUAL PERSPECTIVE OF RECEPTION AREA

## INTERIOR DESIGN

20 SAVILE ROW  
LONDON W1S 3PR

T 020 7292 0585  
F 020 7292 0592  
[www.mirvac.co.uk](http://www.mirvac.co.uk)



